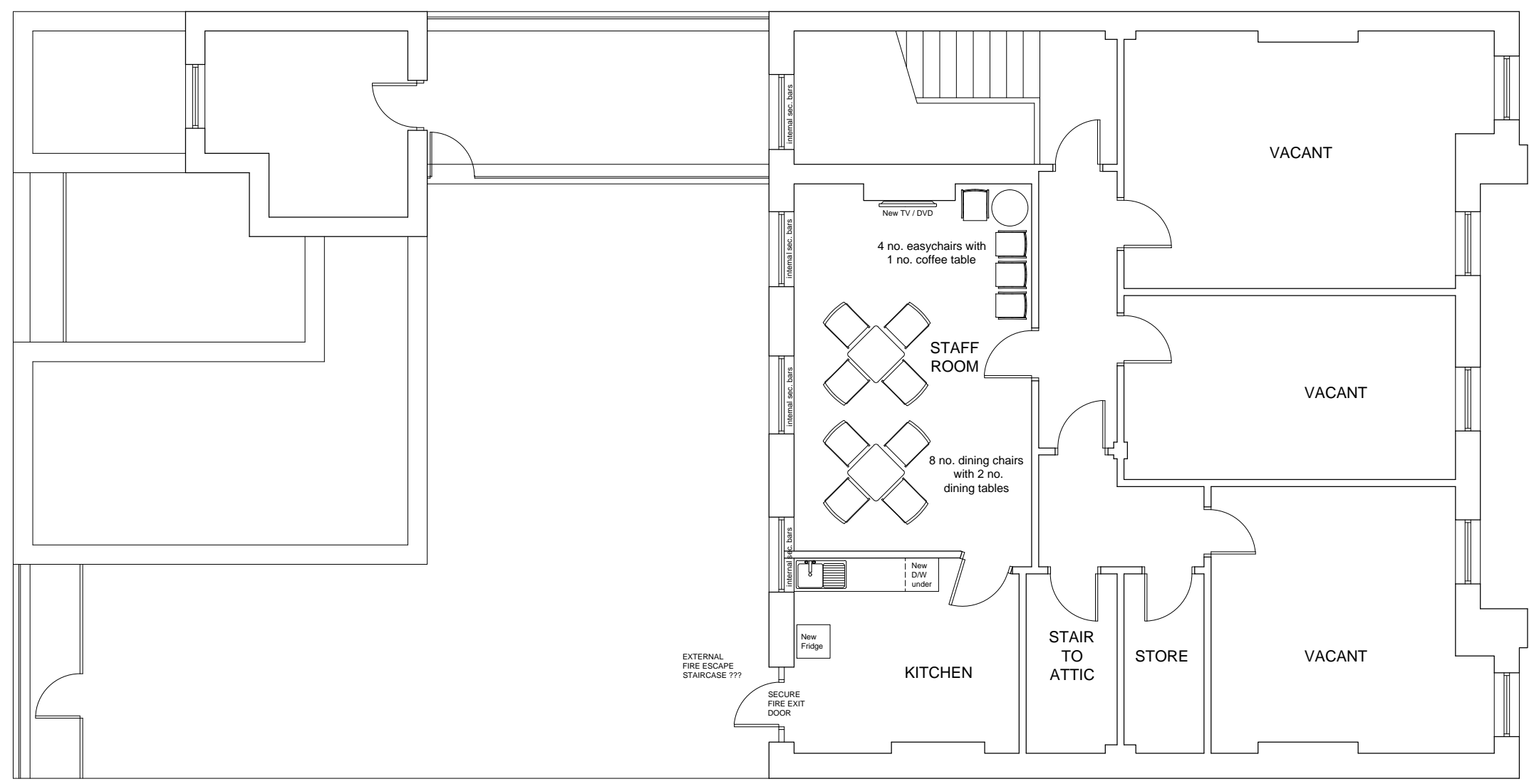
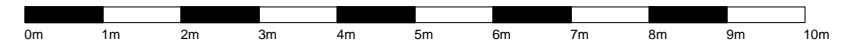


SCALE



SECOND FLOOR PLAN

REV	DATE	REVISION	INITIALS

LLOYDS BANKING GROUP

ALL DIMENSIONS TO BE VERIFIED PRIOR TO COMMENCING WORK. DRAWING TO BE READ IN CONJUNCTION WITH PROJECT SPECIFICATIONS.

THIS DRAWING IS THE PROPERTY OF LLOYDS BANKING GROUP AND COPYRIGHT IS RESERVED BY THEM. THE DRAWING IS ISSUED ON CONDITION THAT IT IS NOT COPIED OR DISCLOSED BY OR TO ANY UNAUTHORISED PERSONS WITHOUT PRIOR CONSENT IN WRITING TO LLOYDS BANKING GROUP - GROUP PROPERTY. ALL MODIFIED DRAWINGS SHOULD BE RETURNED TO LLOYDS BANKING GROUP.

GROUP PROPERTY

BRISTOL - PO Box 112, Canons House, Canons Way, BRISTOL, BS99 7LE
 EDINBURGH - Signhill South, 12 Bankhead Crossway South, EDINBURGH, EH11 4EN
 HALIFAX - Trinity Road, HALIFAX, West Yorkshire, HX1 2RG

PROJECT ADDRESS	SCALE
Lloyds Bank	A1 - 1:50
South Shields, King Street	A3 - 1:100
101 King Street	DATE
SOUTH SHIELDS NE33 1DT	28.01.15
DRAWING DESCRIPTION	DRAWN BY
Second Floor	GAR
Proposed Plan	REVISION
DRAWING NUMBER	-
50689600-AR01-02-0303	